

25 Bell Lane - £2,115 PCM

Barton Mills Bury St. Edmunds IP28 6AJ

shires

Estate & Letting Agents



*"Consistently providing outstanding service to our clients"*

# £2,115 PCM

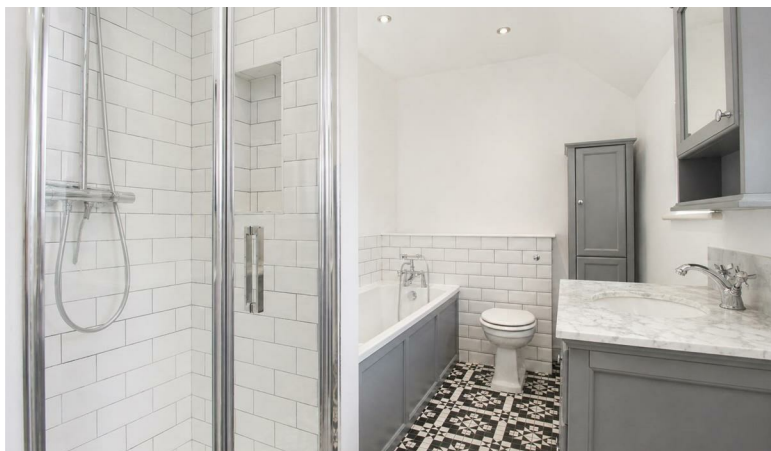
## The Property

Extremely well presented THREE bedroom detached property in the popular village of Barton Mills. The property boasts modern living throughout benefitting from 3 bedrooms, 2.5 bathrooms, spacious living areas, off road parking & fully enclosed rear garden

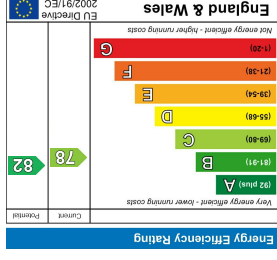
## Features

- DETACHED HOME
- CLOSE TO RAF BASES
- 3 BEDROOMS
- GAS HEATING & ENERGY RATING - C
- MODERN KITCHEN
- APPROXIMATE SIZE 1474 SQFT
- FAMILY BATHROOM & EN-SUITE
- COUNCIL TAX BAND - D
- ENCLOSED REAR GARDEN & PARKING
- AVAILABLE MID FEBRUARY





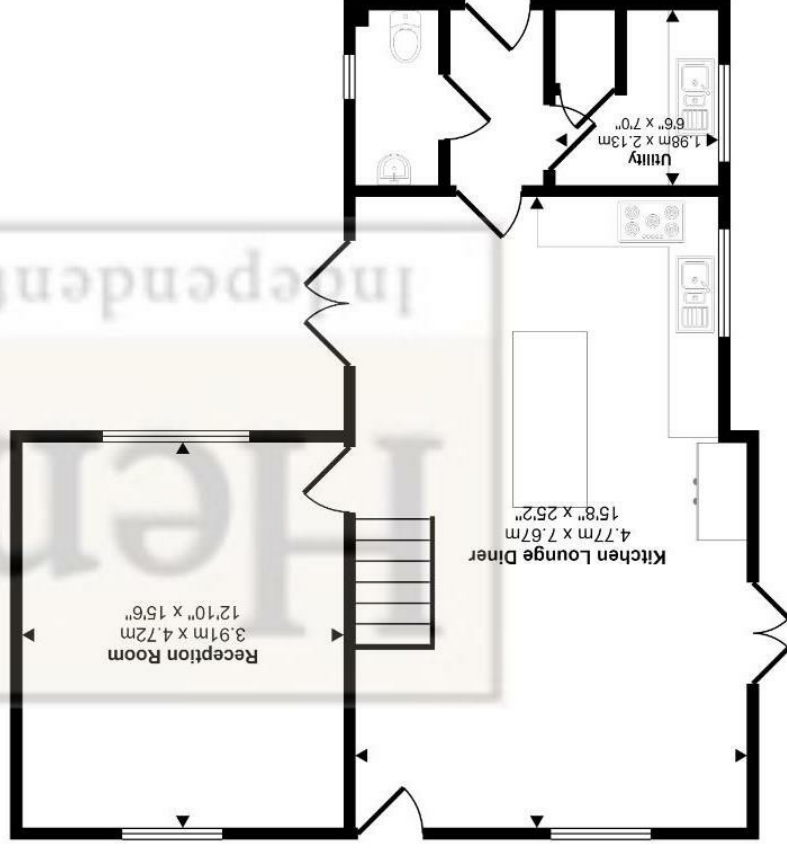
These sales particulars have been produced as a general guide only and we would draw to your attention that we have not carried out a detailed Survey of the property nor have we tested services, appliances or specific fittings. Whilst measurements and statements given within the details are provided in good faith, their accuracy should not be relied upon. If there are any points about which you may be uncertain or would like further clarification, we would suggest that you telephone this office and speak to our staff who will endeavour to assist you.



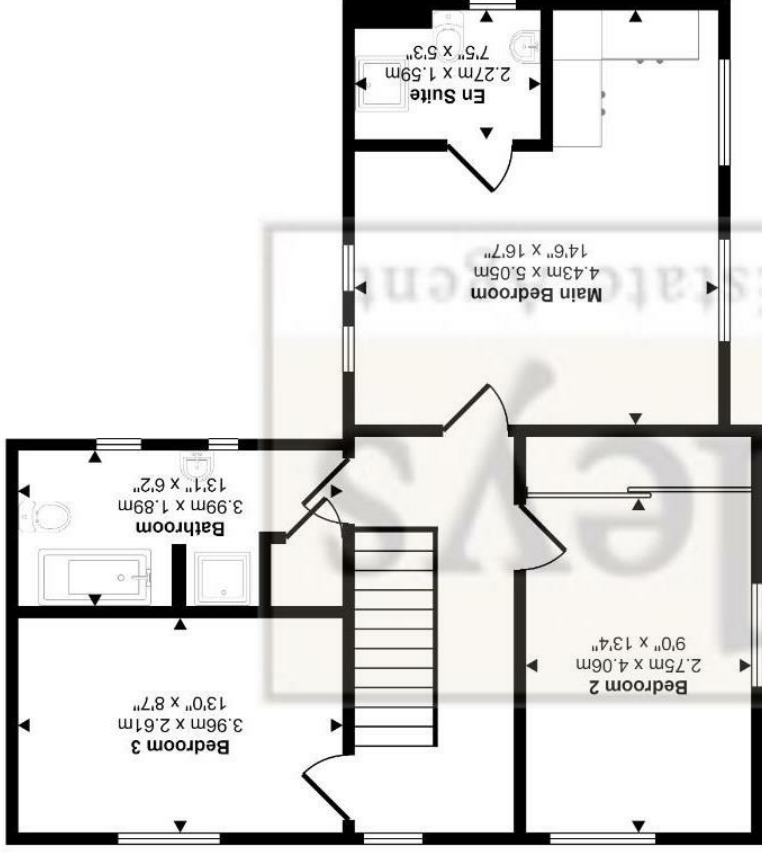
4 New Street, Mildenhall, Suffolk, IP28 7EN  
 T: 01638 712132  
 E: mildenhall@shiresestateagents.co.uk

This floorplan is only for illustrative purposes and is not to scale. Measurements of rooms, doors, windows, and any items are approximate and no responsibility is taken for any error, omission or mis-statement. Icons of items such as bathroom suites are representations only and may not look like the real items. Made with Made Snappy 360.

Ground Floor  
Approx 64 sq m / 694 sq ft



First Floor  
Approx 65 sq m / 705 sq ft



Approx Gross Internal Area  
130 sq m / 1398 sq ft